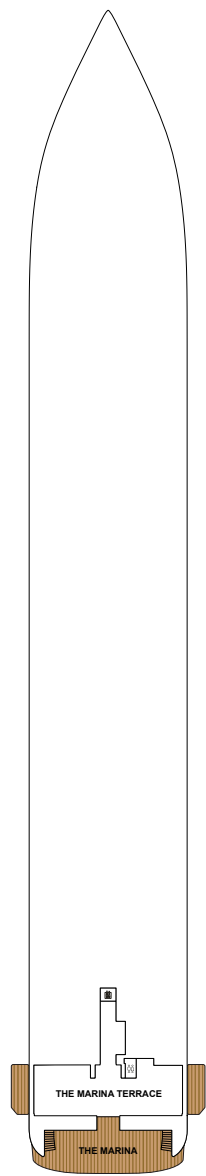
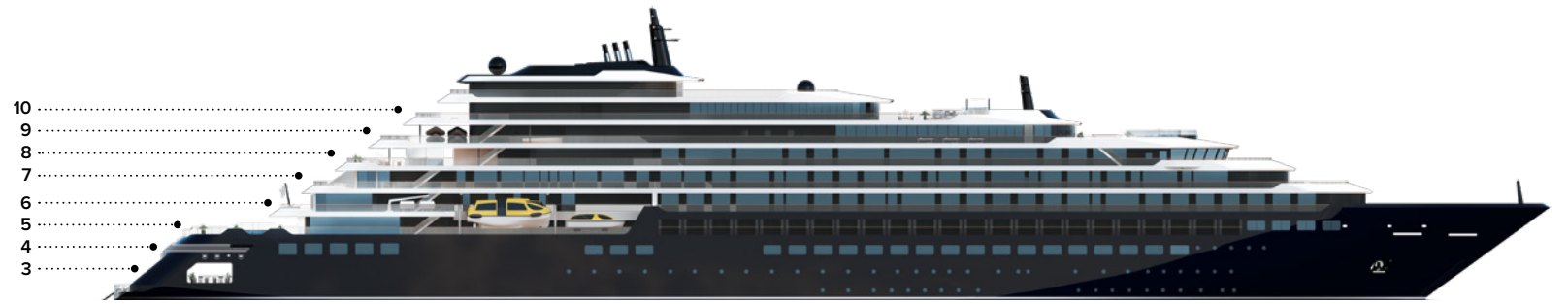
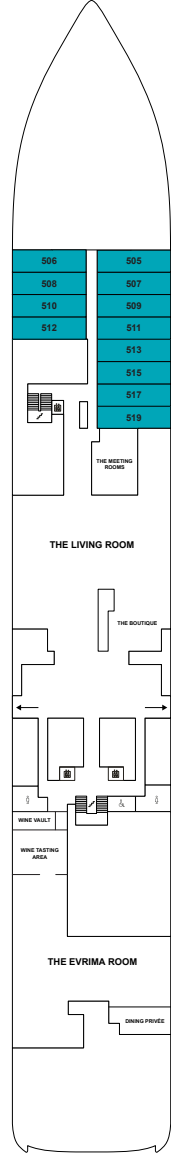




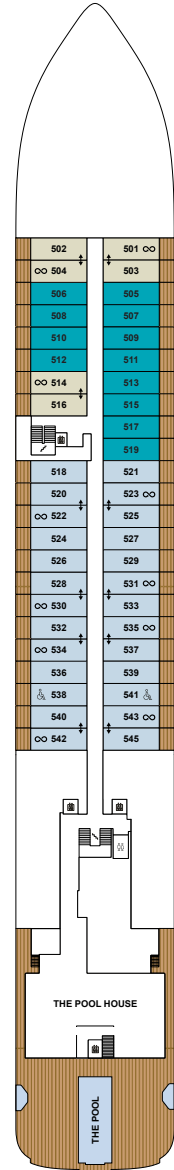
# THE RITZ-CARLTON YACHT COLLECTION



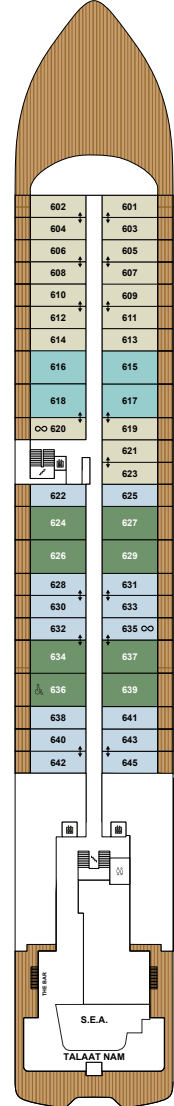
**DECK 3**  
THE MARINA TERRACE  
THE MARINA



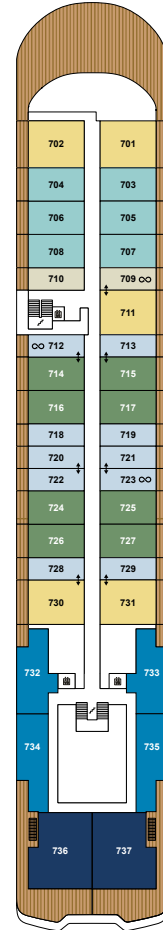
**DECK 4**  
THE MEETING ROOMS  
THE LIVING ROOM  
THE BOUTIQUE  
THE EVRIMA ROOM  
DINING PRIVÉE  
WINE VAULT  
WINE TASTING AREA  
505 – 519 LOWER LEVEL



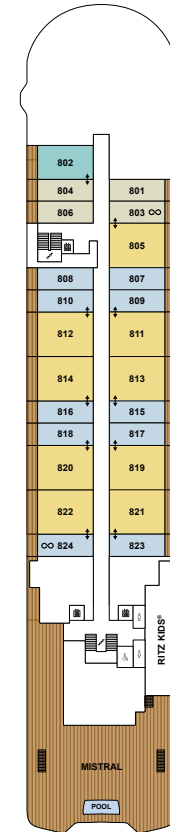
**DECK 5**  
THE POOL HOUSE  
THE POOL  
SUITES 501 – 545



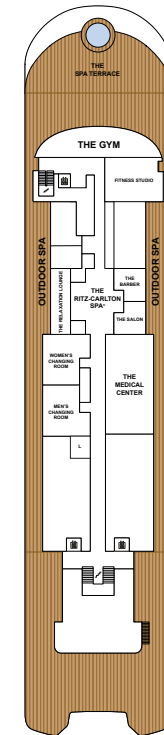
**DECK 6**  
THE BAR  
S.E.A.  
TALAAT NAM  
SUITES 601 – 645



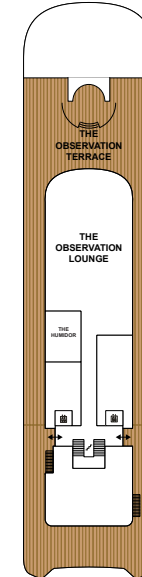
**DECK 7**  
SUITES 701 – 737



**DECK 8**  
MISTRAL  
RITZ KIDS®  
SUITES 801 – 824



**DECK 9**  
THE GYM  
FITNESS STUDIO  
THE RITZ-CARLTON SPA®  
THE SPA TERRACE  
THE BARBER /  
THE SALON  
LAUNDERETTE  
THE MEDICAL CENTER



**DECK 10**  
THE OBSERVATION  
LOUNGE  
THE OBSERVATION  
TERRACE  
THE HUMIDOR

## SUITE CATEGORY

- THE OWNER'S SUITES \_\_\_\_\_
- THE VIEW SUITES \_\_\_\_\_
- THE LOFT SUITES \_\_\_\_\_
- THE GRAND SUITES \_\_\_\_\_
- THE SIGNATURE MID SUITES \_\_\_\_\_
- THE SIGNATURE SUITES \_\_\_\_\_
- THE TERRACE MID SUITES \_\_\_\_\_
- THE TERRACE SUITES \_\_\_\_\_
- ACCESSIBLE SUITES \_\_\_\_\_
- CONNECTING SUITES \_\_\_\_\_
- CONVERTIBLE SUITES\* \_\_\_\_\_

## YACHT SPECIFICATIONS

- GUEST CAPACITY \_\_\_\_\_ 298
- OFFICER AND CREW \_\_\_\_\_ 246
- TOTAL SUITES \_\_\_\_\_ 149
- TONNAGE \_\_\_\_\_ 26,500
- LENGTH \_\_\_\_\_ 624 FEET / 190 METERS
- WIDTH \_\_\_\_\_ 78 FEET / 23.8 METERS
- GUEST DECKS \_\_\_\_\_ 8
- BUILT \_\_\_\_\_ 2019
- YACHT'S REGISTRY \_\_\_\_\_ MALTA

\*Select Terrace Suites have the ability to convert into an expanded living and dining area or remain a second bedroom when connected to the adjacent suite.